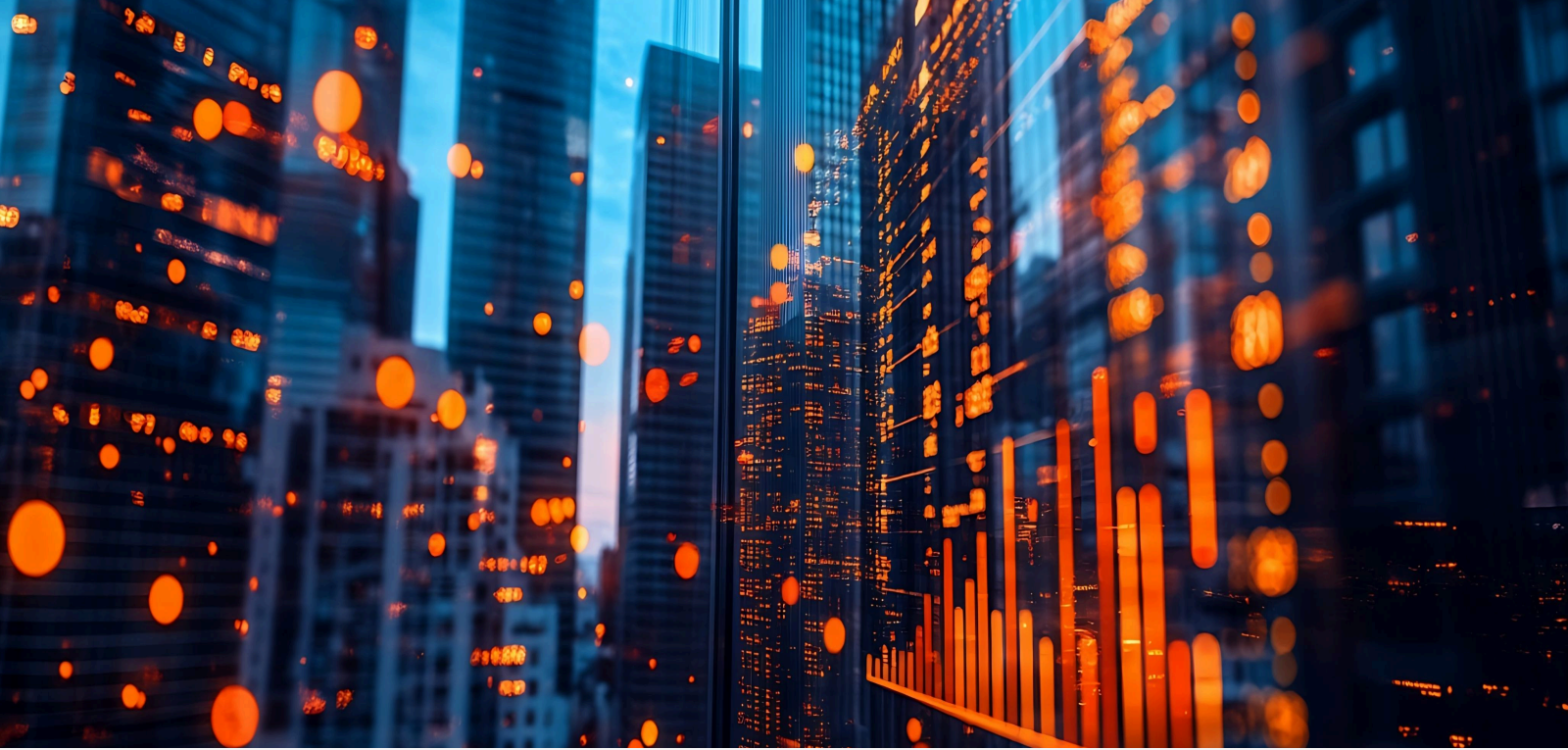




Real Estate Lenders Association  
NEW YORK CITY



## WOMEN OF RELA IMPACT OF AI IN CRE

**Wednesday, April 15, 2026**

9:00 AM - 9:30 AM Welcome & Networking  
9:30 AM - 10:30 AM Presentation  
10:30 AM - 11:00 AM Networking

### Invesco Real Estate

225 Liberty Street, 12th Floor  
New York, NY 10281

Join Women of RELA to learn how AI is reshaping commercial real estate finance. Featuring the expertise of Ursula Sage from Dealpath, this will be an insightful and informative session. We will discuss practical strategies for integrating the use of natural language models into our daily work flow.

Light breakfast and refreshments will be provided.

### Speakers



**Ursula Sage**

Senior Director, Product Management  
Dealpath

Ursula Sage is a seasoned product leader with a proven track record of driving growth and innovation; she is currently shaping Dealpath's AI strategy for commercial real estate. Passionate about education, AI literacy, and the ethical development of AI, she brings a data-driven approach and a deep commitment to responsible innovation.

### Sponsor



DEALPATH

Members Only | Free

[Add to Calendar](#)

[Register](#)

### NATIONAL SPONSORS



Fidelity National Title  
Insurance Company

NEWBANKS®

RIEMER  
BRAUNSTEIN

BLAKE

JOSEPH J. BLAKE AND ASSOCIATES, INC.  
REAL ESTATE VALUATION AND CONSULTING

### CHAPTER SPONSORS

MORRISON  
FOERSTER

OMEGA  
RISK MANAGEMENT, INC.

PARTNER  
Assessment Corporation

ROCKPORT  
VAL | The Alternative.



#RELANYC